



# WILLIAM FARR

C of E Comprehensive School

RESPECT  
FRIENDSHIP  
PERSEVERANCE



RESPONSIBILITY  
COMPASSION  
WISDOM



William Farr is the only 11 - 18 Church of England School  
in the Diocese of Lincoln.

Our vision is to provide all members of the school community  
with the opportunity to engage with 'life in all its fullness  
(John 10:10) through the highest quality of education,  
encouragement and endeavour. We strive for excellence and ensure  
that all students are known, valued and supported to achieve.

STRIVING FOR EXCELLENCE



## HEADTEACHER'S WELCOME

---

On behalf of the staff, students and governors, I extend a very warm welcome to our school.

William Farr is a fully inclusive, Church of England comprehensive school with a strong reputation and rich local history. The school was founded in 1952 by the local vicar, William Farr, after whom the school is named, and whose intent was that it remained a local school. Our Christian distinctiveness is at the heart of our ethos and values.

Our overarching aim is to develop students into well-rounded young people, who have the skills and attributes to make informed choices, be responsible and principled citizens who are ready to take their place in the outside world. We achieve this through high quality teaching and learning and supporting children through excellent care and guidance, where students are recognised and rewarded as individuals.

We offer a broad and balanced curriculum and an extensive range of curricular and extra-curricular activities, together with a wide range of educational visits to complement learning.

What is fundamentally important to us is that children who attend our school are happy, successful and enjoy their time here. They say students at William Farr never leave and that is very true as children here make friends for life. With careful nurturing from school and support from you at home, students demonstrate the Christian values which are contained deep within the spirit of the school. Students show respect, are tolerant, kind and offer friendship to one another.

I hope this prospectus gives you a sense of how special William Farr is. Further information about the school, including a school video, can be found on our website: [www.williamfarr.lincs.sch.uk](http://www.williamfarr.lincs.sch.uk). We are very proud of our students and staff and look forward to welcoming you into our school community.



Jonathan Knowler BA (Hons), PGCE,  
Dip.H.E, NPQH.





SCHOOL VISION STATEMENT



THE HELEN ALLEN WINDOW  
IN TALENT  
BY MICHAEL  
L'ESTRANGE  
FROM THE MEMORIAL  
FOR ANTHONY  
22ND APRIL 2002





## OUR CORE VALUES

---

Our core values of compassion, friendship, respect, perseverance, responsibility and wisdom underpin our school vision and Christian ethos. These values shine through in our students, who achieve academic success and develop into well-rounded citizens who care for each other, are tolerant, kind and generous.

The school welcomes students of all faiths and none. Students have the opportunity to take part in collective worship, church services, school assemblies, PSHE, 'thought of the week' and join Christian union groups.

The school is very proud of its inclusivity and equality provision, which is reinforced through curriculum delivery, care and guidance support and our church values, for which we have received national awards.





## STARTING SCHOOL

As a fully comprehensive school, we welcome children of all abilities: there is no selection on academic ability for entry to William Farr.

Transition from primary school is often a challenging time for students and parents as children move from the familiar surroundings in their primary schools.

Successful integration is based on the smooth transition to secondary education. We work closely with primary schools and parents to ensure curriculum continuity and exchange information to support the children's academic, moral and personal welfare.

Our Induction Programme gives opportunities for students to become familiar with their new environment so that they have the personal confidence to feel secure on their first day in September at their new school.



## STUDENT CARE AND GUIDANCE

---

The attention we give to recognising students' strengths, promoting their personal development and supporting their welfare in a safe and secure environment underpins our values.

Each child has a Form Tutor and Head of Year, who remain with them during their compulsory education. This ensures that we know, understand and can support students as individuals and provide one consistent point of contact for parents. The school also supports students with more challenging circumstances, offering student welfare through our Student Services Hub, and Special Educational Needs and Disabilities provision as part of its inclusive agenda.





## PERSONAL, SOCIAL AND HEALTH EDUCATION (PSHE)

---

An essential cross-curricular element of our guidance programme, PSHE equips students with the confidence to make informed choices about issues or concerns. These include drugs, health and finance education, bullying, personal relationships and careers.

PSHE helps us to fulfil our statutory responsibility to support students' spiritual, moral, cultural, mental and physical development and prepare them for the responsibilities and experiences of life. We follow the PSHE Association's programme of study, which covers Health and Wellbeing, Relationships and Sex Education, Citizenship and British Values, and Living in the Wider World.



## A CONCERN FOR OTHERS

A sense of responsibility, respect, charity and equality is a requirement of every student. Without compassion for those less fortunate, our school would be a lesser place.

Each year, thousands of pounds are raised for charities chosen by the students. The Duke of Edinburgh Award, our relationship with 'Lions International', support for such charities as British Heart Foundation, Children in Need, Alzheimer's Society, the Poppy Appeal, local food banks, and numerous cancer charities, as well as work with the Diocese of Lincoln, give further opportunities for community service and responsibility.

One of our proudest achievements is the development of our school for disabled access. This has been an ongoing project over many years and now every one of our buildings is equipped and accessible. Through this initiative, we can remain faithful to the fundamental principle of welcoming children of all abilities to our fully comprehensive school.





## INSPIRATIONAL TEACHING AND LEARNING

At William Farr, students are taught by enthusiastic teachers who are subject specialists and passionate about their subjects. They strive for excellence in all they deliver and we support them with the latest professional development and educational research to help them to continue to excel. Staff at William Farr are regularly asked to lead professional development training for colleagues in-house and on a regional and national stage.

The comprehensive academic curriculum provides a broad and balanced programme from 11 - 18, placing value on scientific, technological, linguistic, artistic and creative ability. We avoid specialisation at an early age so as to ensure the flexibility, experience and opportunity for children of all abilities to realise their full potential.

The vast majority of our students take at least nine subjects to GCSE, including English, Mathematics, Science and Religious Studies. In the Sixth Form, a wide range of Advanced Level subjects is available.

We are a member of a number of prestigious national organisations which recognise outstanding teaching and learning. Our students benefit from an extensive Library and Resource Centre, whilst Sixth Formers have their own Study Room.











## THE WIDER LIFE OF THE SCHOOL

The school has a long tradition of travel, both locally and internationally. Without exception, all departments enhance what they teach with a myriad of trips and experiences.

There are regular ski trips to Italy and study visits to America and Russia. The Languages department also has a full range of excursions for students of all ages to promote European understanding. Younger students go to Brittany and older students have the opportunity to study in Paris and Spain.

Our World Challenge programme has meant our students have been able to experience life in far-off places. Students

have travelled all over the globe, including Peru, Madagascar, India, Vietnam, Nepal, Morocco, Borneo, Nicaragua, Cambodia, Thailand and Costa Rica.

Extra-curricular activities are vitally important. Learning is enhanced through fieldwork trips, visits to museums, art galleries, the theatre and sporting venues, the Duke of Edinburgh Award and through the input of a wide variety of speakers and guests to the school.





## THE ARTS

In an increasingly technological society, it is essential to provide balance in the curriculum if creativity, self-confidence and expression are not to be suppressed.

The Arts are very important to us at William Farr. Exhibition of work is encouraged, as any visitor can observe from the superb displays of expressive creativity to be seen throughout the school.

Students are encouraged to play musical instruments and a large number receive tuition from specialist teachers. The orchestra, choir, instrumental groups and individuals perform regularly, often supported by professional musicians in workshops and concerts.

Our artists have won national recognition for exceptional quality of work at GCSE and A level and this is recognised in the award of the 'ArtsMark'. A wide variety of work is on display around the school and on show at the Annual Exhibitions of Art and Design & Technology.

Facilities for performance are significantly enhanced by the Performing Arts Centre. Our commitment to the development of self-confidence and collaboration involves regular performances, concerts, plays, visits by professional companies, visits to local and national theatres, expressive experiences in major school productions and in group and ensemble work with dramatists, poets and dancers.





## THE HOUSE SYSTEM

Our House system provides a supportive environment for friendly competition, but also opportunities for students across Years 7-13 to assume responsibility and develop leadership abilities.

We promote the achievement of all our students in its widest form in a totally positive way. We recognise their contributions, not only to the school community, but also beyond.

Our House system is a highly valued aspect of our school. Students have the opportunity to take part in a variety of events, such as House sport, performing arts, quizzes and House Bake Off to gain points, culminating in a celebration in Whole School Assembly. We believe that not only does it teach students important skills, but also develops in them a true sense of school community.



## SPORT AND HEALTH

The value of physical and health education as a complement to academic study cannot be underestimated.

We are proud of our continuing success in competitive sport and the reputation gained by the teams regularly at district, county, regional and national level. We also support individuals who are selected to compete for regional and national teams.

Students are encouraged to develop individual skills and teamwork and to strive for excellence regardless of their natural ability.

We are committed to the values of competition, which develops team spirit and co-operation, and teaches how to cope with the pleasure of winning and the disappointment of losing.

We are firmly committed to promoting healthy eating and provide healthy, tasty and nutritious food and drink in line with the School Food Standards.



## SIXTH FORM

---

We understand that deciding where to study after GCSEs is an important decision. William Farr Sixth Form offers a comprehensive and welcoming induction programme designed to prepare students for the rigours of Sixth Form study. The transition from GCSE to A-level study can be a challenging time and staff ensure students are supported in identifying, developing and embedding successful study behaviours and routines.







## STUDENT EXPERIENCE

Academic excellence, strong welfare support and exceptional opportunities for personal development ensure a positive student experience. We offer a wide range of A-level courses, with students typically studying 3 A-levels alongside the Extended Project Qualification (EPQ).



Using a variety of teaching methods, students have the opportunities to learn in different ways and, as a result, students develop critical thinking and deepened subject knowledge. Students are active in their learning and engaged in the wider school community.

Students take advantage of the leadership opportunities on offer, for example, the School Council, Student Mentors, House Leaders, taking part in concerts and productions and raising money for charity.









## PREPARING FOR THE FUTURE

A vibrant, supportive and aspirational learning environment provides a context in which young people can successfully develop personal skills and qualities in readiness for their next stage, whether this be further education, employment or training.



Students are encouraged to seek out work experience placements and leadership opportunities. They are active in acquiring the knowledge and transferable skills needed for life after Sixth Form. A dedicated Sixth Form team will advise, support and guide students towards their goals.

Once students leave the Sixth Form, they remain a valued part of the William Farr family and many students return to the school to talk to our current Sixth Form students about their pathways and experiences.

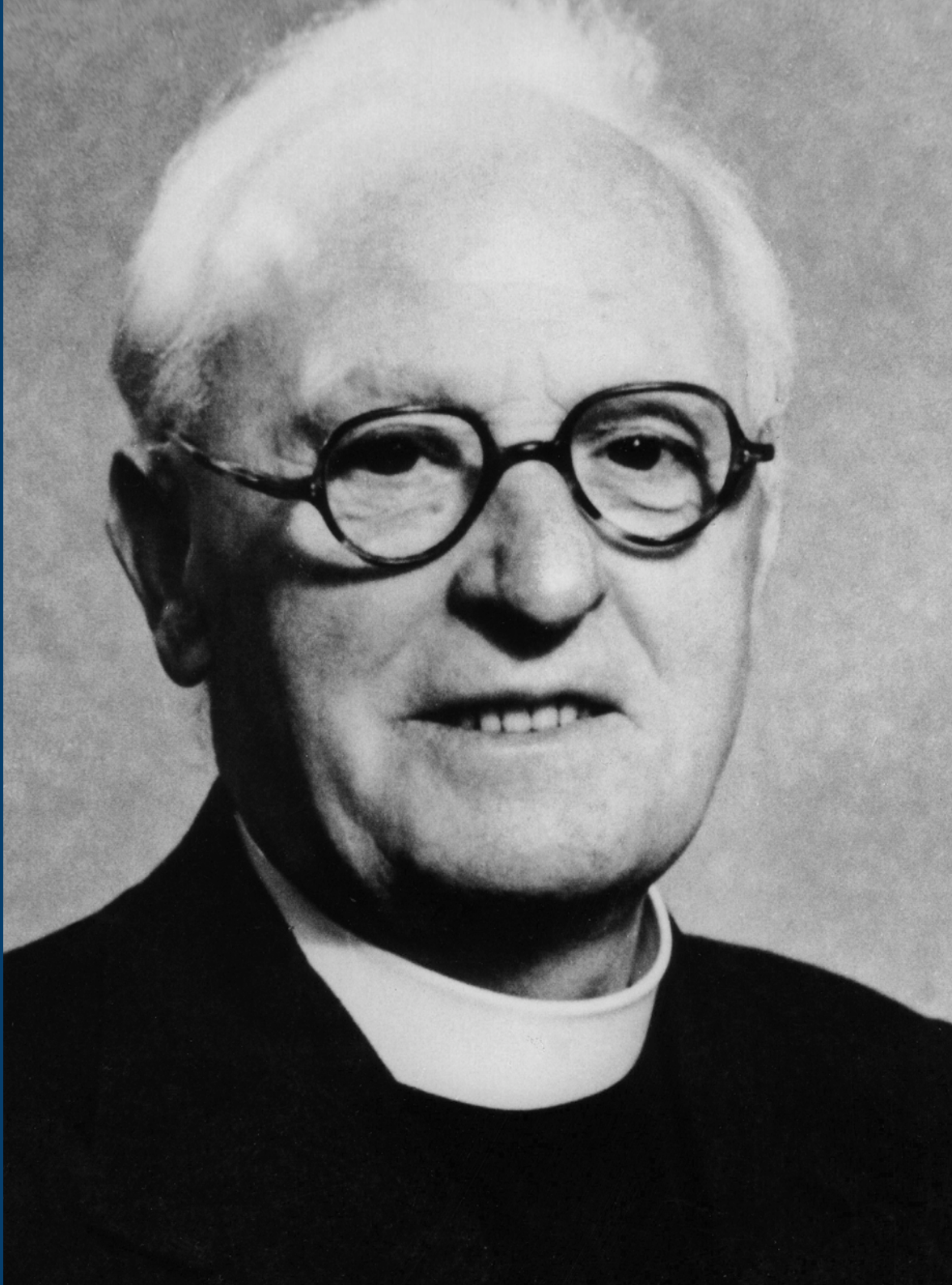
At William Farr, we are exceptionally proud of our Sixth Form and its place at the heart of the school community.





*This will be a school run by local managers. It is a mistake to have the state robbing everybody of initiative and you must give local people a chance to do something for themselves.*

Reverend William John Farr, 1953



## HERITAGE

Few schools in Lincolnshire bear the name of their founder. The Reverend William Farr, Vicar of Welton from 1929 to 1953, in 1946 purchased the land and the buildings of RAF Dunholme Lodge, a WWII Bomber Command Station with £600 of his own savings. After a six-year campaign, his dream of a Senior School in the village was finally realised in 1952. William Farr died in 1955 and the school was named in his memory.

In 1952, there were less than 200 children, aged from 11 - 14, housed in a cluster of old military 'Nissen' huts and 'HORSA' buildings. In 1972, a major expansion took place to respond to the raising of the school-leaving age to 16 with the addition of science laboratories, a new library, the Sports Hall and classrooms for Languages, Geography and History.

In October 1996, in response to the pressures of the newly established Sixth Form, the History and Geography 'Banks' building was opened by Her Majesty the Queen and Prince Philip.

In 2000, the school embarked on an ambitious £7m expansion programme. The 'Wolfson' building, a £750,000 'centre of excellence' for Science, Mathematics and Business Studies, with two further laboratories, was built.

The 'Galileo' building was opened by HRH Prince Edward in 2003. This was followed by 'Halley' in 2004 when additional facilities for Mathematics were also opened by HRH Prince Edward.

In 2005, there was new accommodation for RE and an extension of the tennis courts, car park and new gymnasium.

In 2006, our £1.7m 'Escher' building for Performing Arts and the refurbishment and extension of the Art Department and catering facilities were opened.

In 2007, an addition to 'Wolfson' provided a new ICT suite, high quality accommodation for Learning Support education, a

quiet room/chapel "The Lawres Chapel" and further Design and Technology facilities. The final phase to link Art with Design and Technology in Escher and provide a completely remodelled foyer in Arkwright was completed in May 2008.

On 1 January 2011, William Farr became an Academy, ceasing to be maintained by the Local Authority and receiving all its funding directly from central government.

In 2012, the newly refurbished Physical Education facilities were opened by Baroness Sue Campbell.

This was shortly followed by an extension to the English and Science accommodation in 2015, with the building of a new Science laboratory and two classrooms.

In 2017, we joined the 'Darwin' and 'Fibonacci' buildings, providing access to our resources area via a lift for wheelchair users. We also added a suite of student support rooms, and a further two new classrooms, thus also allowing the creation of a set of four dedicated ICT and Computing rooms. This new build was opened by our well respected and now retired headteacher, Mr Paul Strong (OBE). Today almost 1,500 students (with over 250 in the Sixth Form) and over 200 staff are able to enjoy some of the most advanced facilities in purpose-built, well-designed accommodation of the highest standard. The Reverend William Farr would, no doubt, be well pleased with the dividends of his original investment of £600!

## JOIN US!

---

If you share our school vision and would relish the opportunity for your child to join us to engage with 'life in all its fullness' (John 10:10) through the highest quality of education, encouragement and endeavour, we would be delighted to hear from you.





## A DISTINCTIVE VISION

---

*William Farr Church of England Comprehensive School's vision is to provide all members of the school community with the opportunities to engage with life in all its fullness (John 10:10) through the highest quality of education, encouragement and endeavour. We are committed to striving for excellence and ensuring that all students are known, valued and can achieve.*

## CORE VALUES

---

*Compassion, Friendship, Respect, Perseverance, Responsibility, Wisdom.*

WILLIAM FARR CHURCH OF ENGLAND COMPREHENSIVE SCHOOL

Lincoln Road, Welton, Lincoln, LN2 3JB

T: (01673) 866900 | E: wfarr@williamfarr.lincs.sch.uk

[www.williamfarr.lincs.sch.uk](http://www.williamfarr.lincs.sch.uk)